

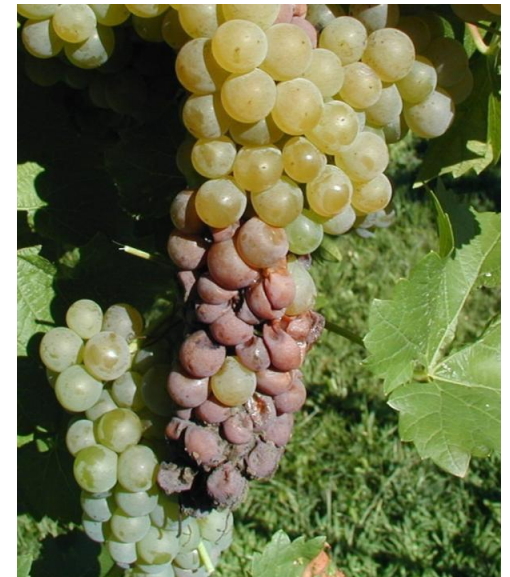


2011 Wine Grape IPM Workshop

Lancaster, Erie, Susquehanna, Washington PA



Dr. Mizuho Nita, Virginia Tech
Dr. Noemi Halbrendt, Penn State
Bryan Hed, Penn State
Jeanette Smith, VineSmith Consulting
Marty Keen, Landey Vineyard
Mark Chien, Penn State



Workshop Goals

- Make your disease and pest management more effective
- Understand the organisms you are up against
- Update you on IPM materials and management methods
- Grape pathology update
- Know the people and resources that can help you
- Review past spray programs and develop a current one
- Improve your grape and wine quality
- Provide credits to licensed applicators

Pest Management Guidelines

A Cornell Cooperative Extension Publication



Cornell University
Cooperative Extension

PENNSTATE



College of
Agricultural
Sciences



[Home](#) | [CALs](#) | [PMEP](#) | [All IPM Guidelines](#)

New York and Pennsylvania Pest Management of Grapes

Chapters

- [Home](#)
- [Acknowledgments](#)
- [Table of Contents](#)
- [1 Pesticide Information](#)
- [2 Introduction](#)
- [3 Vineyard Disease Management](#)
- [4 Vineyard Insect Management](#)
- [5 Pest Management Schedules for Diseases and Major and Minor Insects](#)
- [6 Vineyard Weed Management](#)
- [7 Sprayer Technology](#)
- [8 Pesticides Labeled for New York and Pennsylvania Vineyards](#)

Order Print Version

- [Order Print Version](#)

Resources

- [Recycling Agricultural Plastics Project](#)
- [Abbreviations](#)
- [Laundering Pesticide-Contaminated Clothing](#)
- [Pesticide Emergency Numbers](#)

New York State Pesticide Labels

- [Search for Current Product Labels](#)

Other Resources

- [Pesticide Management](#)

2011 New York and Pennsylvania Pest Management Guidelines for Grapes



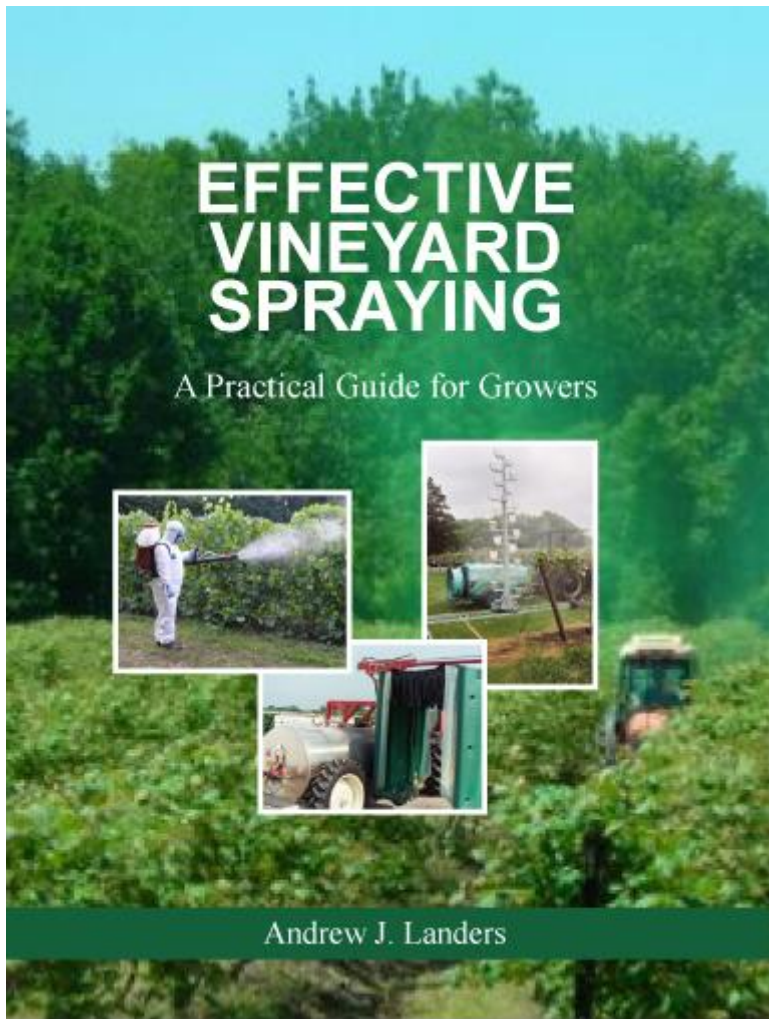
Multicolored Asian ladybeetle on Concord grape at harvest.
(Photo by: Tim Weigle, NYS Integrated Pest Management Program)

Every effort has been made to provide correct, complete, and up-to-date pest management information for New York State and Pennsylvania at the time this publication was released for printing (December, 2010). Changes in pesticide registrations, regulations, and guidelines occurring after publication are available in county cooperative extension offices or from the Pesticide Management Education Program web site (<http://pmep.cce.cornell.edu/>) or from the Pennsylvania Department of Agriculture's Bureau of Plant Industry (<http://www.agriculture.state.pa.us/>).

Where trade names appear, no discrimination is intended, and no endorsement by Cornell Cooperative Extension or Penn State Cooperative Extension is implied.

These guidelines are not a substitute for pesticide labeling. Always read the product label before applying any pesticide.

<http://ipmguidelines.org/grapes/>



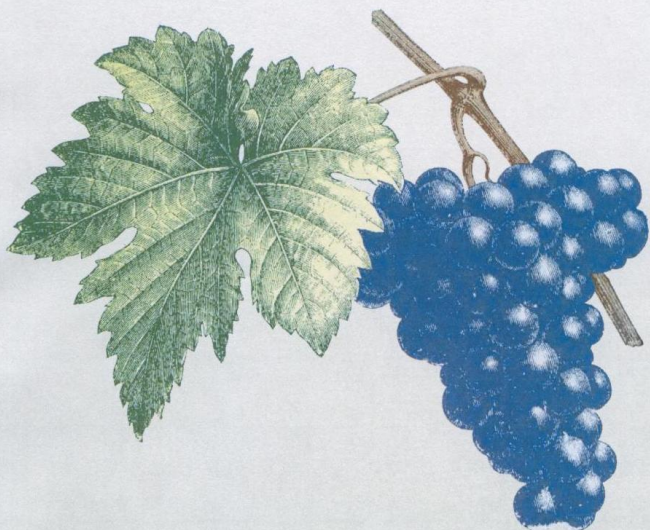
Dr. Andrew Landers



<http://www.effectivespraying.com/>

2010

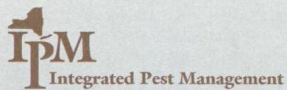
Production Guide for Organic Grapes



NYS IPM Publication No. 224



Cornell University
Cooperative Extension



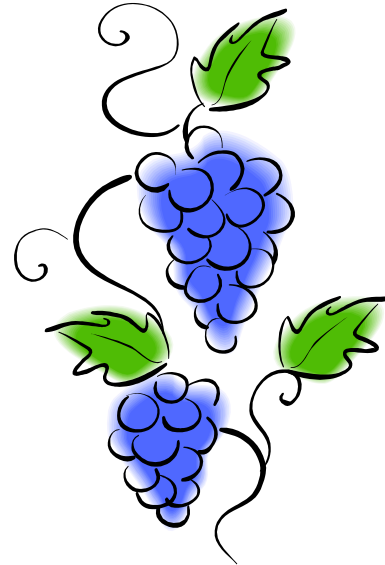
New York State
Department of
Agriculture & Markets



http://www.nysipm.cornell.edu/organic_guide/grapes.pdf

Housekeeping

- VTC to Erie, Susquehanna and Washington
- Pesticide credits – 6 category + 3 core
- Workshop evaluation via SurveyMonkey
- Discussion and Q&A
- Spray program review
- Handouts
- Lunch
- Restrooms



Meeting Organizers

- John Esslinger and Kim Grace in Susquehanna County
- Andy Muza in Erie County
- Lee Stivers in Washington County
- Carol Lee Shirk in Lancaster County

